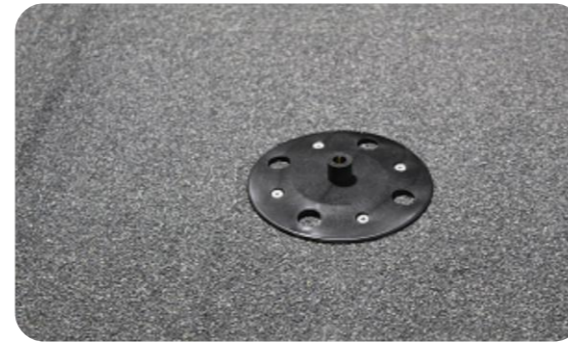
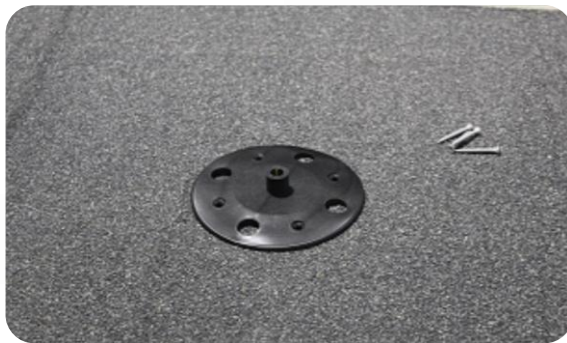


Quick-Slide Mountinganchor

General assembly instructions (bitumen)



Follow the simple steps below to install the mounting anchor.
Always thoroughly clean the roof covering where you will be installing the anchor.



Step 1

Place the black mounting base plate on the roof covering at the desired location.

Fasten the mounting base plate with 4 screws.
The chosen screw depends on the thickness of the insulation and the surface in which you attach it.
(the large holes are for woodwoolcement screws)



Step 2

Now heat the center of the bottom of the sleeve until the bitumen starts to flow visibly and place the bitumen sleeve over the anchor and press firmly.

The sleeve can then be further incorporated waterproof on the roof covering. Work from the inside out.
Zorg voor een goede vloeinaad rondom het manchet.
(Can also be applied with a small roof torch)



Step 3

Place the black EPDM sealing ring.
Then screw the supplied threaded rod on hand tight.

Quick-Slide Mounting anchor

General assembly instructions (bitumen)



Step 4

Place the black cover cap over the threaded rod and fit and tighten the locknut.

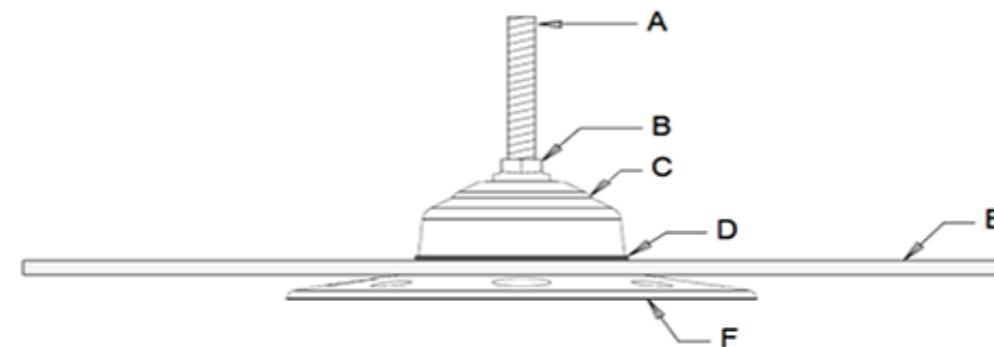


Step 5

The mounting anchor is now mechanically and waterproof attached to the roof construction.

Parts mounting anchor

- A** Rivet M10 x 100 RVS A2
- B** Lock nut M10 RVS A2
- C** Cover cap Ø 66 mm
- D** EPDM sealing ring 2,0 mm
- E** Roofing Ø 330 mm
- F** Mounting plate Ø 150 mm



Quick-Slide roofingmaterials

Helmkamp 46C, 7091 HR Dinxperlo NL

Phone: 0031-315-241503

Info@dakverkoop.nl

kvk: 75213761

[VATnr: NL8601.89.612.B01](https://www.vat.nl/VATnr/NL8601.89.612.B01)